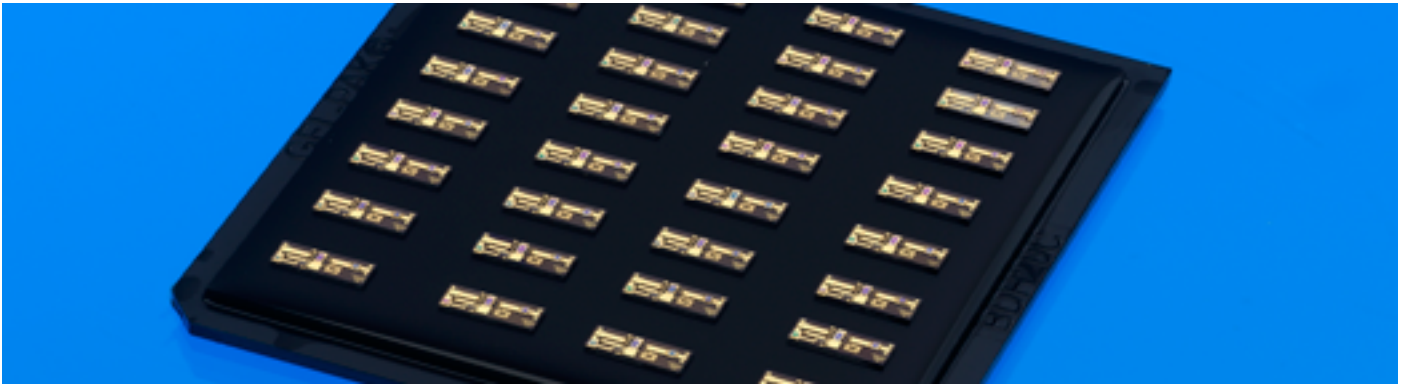


MALIML0024

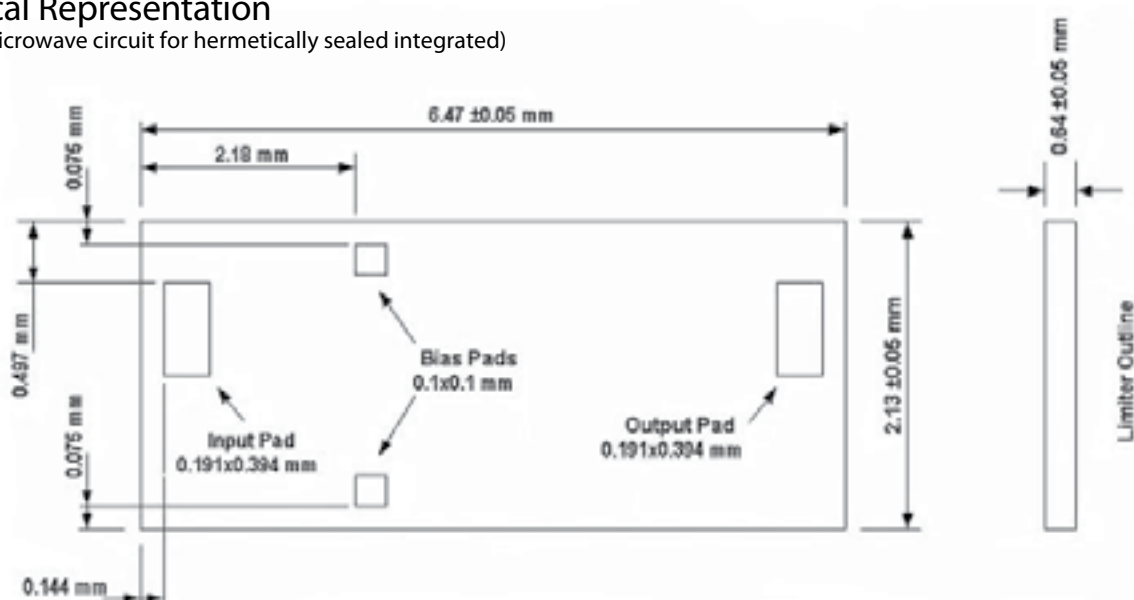
S-Band 'Drop-in' Limiter Module



- High Reliability
- Designed for integrated applications
- Weight and space saving design
- High power handling
- Low insertion loss
- European Manufacture

Mechanical Representation

(Uncovered microwave circuit for hermetically sealed integrated)



This high reliability S-band 'Drop-in' limiter module features a weight and space saving design. By utilising API Technologies GMIC (Glass Microwave Integrated Circuit) Technology, integration applications can benefit from both small feature size and high performance.

This design has low insertion loss and high power handling capability, essential parameters for limiter applications.

The same concepts can be applied to your particular integration needs. Please contact the factory for details.

RF Performance

Parameter	Value			Units
	Min.	Typ.	Max.	
Frequency Band	2.7		3.8	GHz
Operating Temperature T _{op}	-10		+65	°C
Insertion Loss		0.3	0.5	dB
Isolation	35			dB
Peak Input Power (Pulsed)			100	W
Output Flat Leakage (CW and Pulse)			+19	dBm
Spike Leakage (RF rise time >= 15ns)			10	nJ
Recovery time, Normal Operating (to within 3db of I/L at input power test conditions)			500	nS
Input VSWR (Pin ≤ -10dBm)			1.5:1	Ratio
Output VSWR (Pin ≤ -10dBm)			1.5:1	Ratio

(Applies over the frequency range @ +25°C, output and input load impedance of 50 ohms. Unless otherwise stated limits & conditions are indicated values.)

Whilst every effort is made to ensure the accuracy of the information contained in this brochure, no responsibility can be accepted for any errors and/or omissions.

Descriptions and specifications of products are subject to change without notice.